

# GRABBER

**X<sup>3</sup>** CONQUER  
YOUR TERRAIN

**ANYWHERE**  
IS POSSIBLE

**GRABBER X<sup>3</sup>**



General Tire's new mud terrain tyre delivers outstanding off-road performance, coupled with good street manners. The Grabber X<sup>3</sup> offers aggressive styling and is engineered for durability, with innovative tread features.



**GENERAL TIRE**

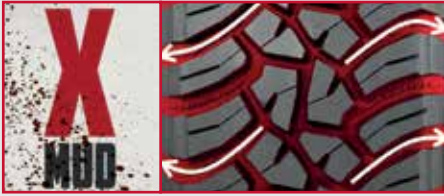
SINCE 1915.  
GENERAL TIRE. A BRAND OF CONTINENTAL.

[WWW.GENERALTIRE.EU](http://WWW.GENERALTIRE.EU)



# GRABBER X<sup>3</sup> CONQUER YOUR TERRAIN

## WELCOME TO THE EXTREME



### EXTREME performance in MUD with engineered tread features

Enjoy extreme off-road maneuvers with aggressive and open pattern design that achieve high traction levels in mud, dirt, sand and gravel. Evacuation channels ensure quick and efficient self-cleaning action.



### EXTREME performance in DIRT with superior grip

Experience superior loose surface grip with block chamfers & traction notches that provide additional biting edges and open the pattern. Stone bumpers that protect the groove bottom and minimize stone drilling improve tread life.



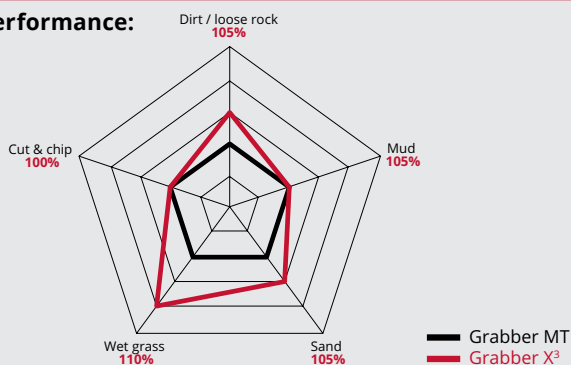
### EXTREME performance on ROCK with breakthrough cut resistance

Conquer with confidence: multi-angle gripping edges arranged for grip in every direction and large sidewall lugs and deflection ribs that protect the tyre body. Master extreme off-roading with excellent grip and strong sidewall protection.

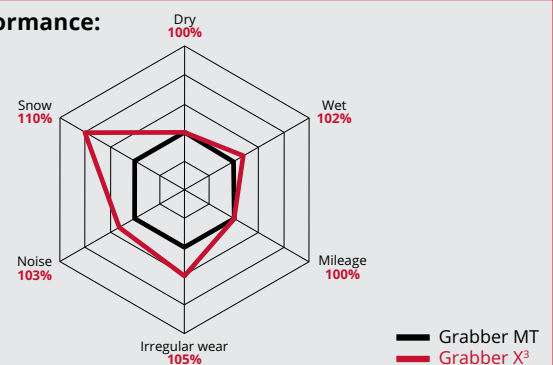


Three-ply construction on all sizes provides race-proven durability and puncture resistance. Robust compound gives excellent cut and chip resistance. Ultra high-strength steel belts ensure even footprint for confident stability.

### Off-Road Performance:



### On-Road Performance:



Rim diameter	Size <sup>1)</sup>	Load / Speed index / Extra Load / Load Range	Sidewall	Permitted rim widths (in inch)	Tyre dimensions		Rolling circumference (mm) + 1.5% - 2.5%
					Max. standard value in operation width (mm)	outer diameter (mm)	
15"	LT215/75 R 15	106/103Q LRD	BSW	5.5 - 7.0	t.b.d. <sup>3)</sup>	715	t.b.d. <sup>3)</sup>
	LT235/75 R 15	110/107Q LRD	BSW	6.0 - 7.0	249	747	2253
	30 X 9.50 R 15LT	104Q LRC	BSW	6.5 - 8.5	260	765	2308
	31 X 10.50 R 15LT	109Q LRC	BSW	7.0 - 9.0	289	797	2386
	33 X 12.50 R 15LT	108Q LRC	BSW	8.5 - 11.0	t.b.d. <sup>3)</sup>	844	t.b.d. <sup>3)</sup>
	35 X 12.50 R 15LT	113Q LRC	BSW	8.5 - 11-0	t.b.d. <sup>3)</sup>	897	t.b.d. <sup>3)</sup>
16"	LT235/85 R 16	120/116Q LRE	BSW	6.0 - 7.5	249	822	2478
	205 R 16C	110/108Q LRD	BSW	5.5 - 6.5	216	750	2230
	LT225/75 R 16	115/112Q LRE	BSW	6.0 - 7.0	236	758	2254
	LT245/75 R 16	120/116Q LRE	BSW	6.5 - 8.0	263	788	2345
	LT265/75 R 16	119/116Q LRD	BSW	7.0 - 8.0	283	820	2472
	LT285/75 R 16	116/113Q LRC	BSW	7.5 - 9.0	303	852	2527
	LT265/70 R 16	121/118Q LRE	BSW	7.0 - 8.5	283	792	2357
17"	LT245/70 R 17	119/116Q LRE	BSW	6.5 - 8.0	t.b.d. <sup>3)</sup>	790	t.b.d. <sup>3)</sup>
	LT265/70 R 17	121/118Q LRE	BSW	7.0 - 8.5	288	818	2470
	LT285/70 R 17	121/118Q LRE	BSW	7.5 - 9.0	t.b.d. <sup>3)</sup>	848	t.b.d. <sup>3)</sup>
	33 X 12.50 R 17LT	114Q LRD	BSW	8.5 - 11-0	t.b.d. <sup>3)</sup>	842	t.b.d. <sup>3)</sup>
	37 X 12.50 R 17LT	116Q LRC	BSW	8.5 - 11-0	t.b.d. <sup>3)</sup>	947	t.b.d. <sup>3)</sup>
19"	255/55 R 19 <sup>2)</sup>	111Q XL	BSW	7.0 - 9.0	276	775	2327

<sup>1)</sup> all sizes with rim protection (FR), <sup>2)</sup> 2 ply construction, <sup>3)</sup> to be defined